

REMOVAL OF IMPROVEMENTS							
PLAN SHEET	STA	LOC	ROADWAY	EA.	L.F.	S.Y.	DESCRIPTION
2		LT	SECKMAN RD	1			4 SIGNS AND ONE POST
2		RT	SECKMAN RD	1			4 SIGNS AND ONE POST
PAY TOTAL				1 LUMP SUM			

MOBILIZATION	1 LUMP SUM
--------------	------------

PEDESTRIAN ACTUATED CROSSING SYSTEM	1 LUMP SUM
-------------------------------------	------------

TRAFFIC CONTROL DEVICES	1 LUMP SUM
-------------------------	------------

CONTRACTOR SURVEYING AND STAKING	1 LUMP SUM
----------------------------------	------------

DETECTOR, PUSHBUTTON	2, EACH
----------------------	---------

CONDUIT AND CABLE TO POWER SOURCE	1 LUMP SUM
-----------------------------------	------------

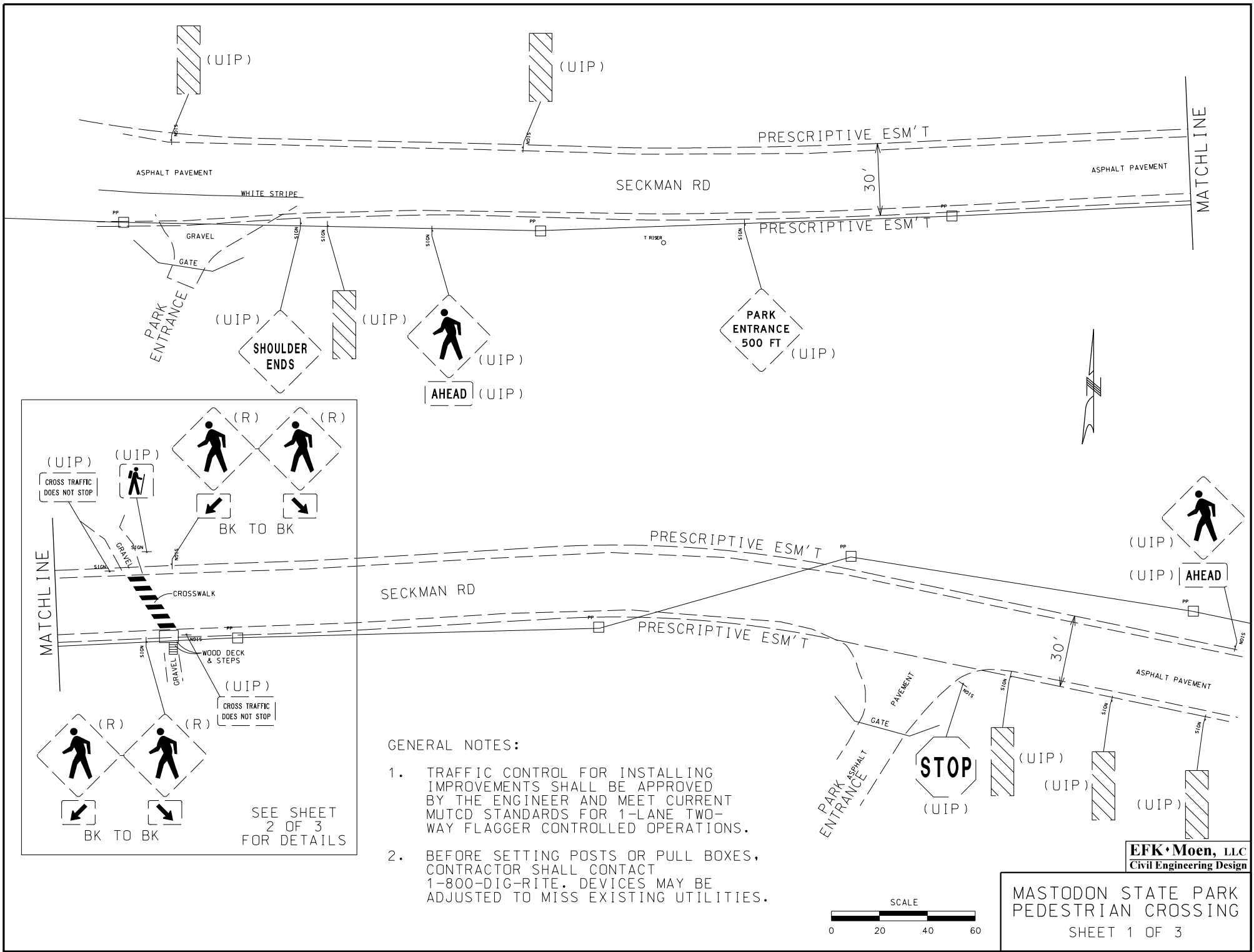
CONDUITS, PULL BOXES					
PLAN SHEET	ROADWAY	LOC	CONDUIT	CONDUIT	PULL BOX
			3" , PUSHED	3" , TRENCH	PREFORMED
			L.F.	L.F.	EA.
2	SECKMAN RD	RT			1
2	SECKMAN RD	LT			1
2	SECKMAN RD	LT		15	
2	SECKMAN RD	CL	38		
2	SECKMAN RD	RT		8	
TOTALS			38.0	23.0	2.0

SIGN SUPPORTS							
PLAN SHEET	ROADWAY	LOC	POST	PIPE	CONCRETE	BREAK-	REMARKS
			LENGTH	POSTS	FOOTINGS	AWAY	
			L.F.	4 INCH	EMBEDDED	ASSEMBLY	
				LBS	C.Y.	EACH	
3	SECKMAN RD	LT	20	216.00	0.36	1	10.8 LBS/L.F. FOR 4" POST
3	SECKMAN RD	RT	21	226.80	0.36	1	
TOTALS				450.0	0.7	2	

SIGNS										
PLAN SHEET	ROADWAY	LOC	SIGN	AREA	SIGN	AREA	SIGN	AREA	TOTAL	REMARKS
			W11-2	S.F.	W16-7PR OR PL	S.F.	R10-25	S.F.	AREA	
			EACH		EACH		EACH		S.F.	
2	SECKMAN RD	LT	2	32.0	2.0	3.8	1.0	0.8	36.5	
2	SECKMAN RD	RT	2	32.0	2.0	3.8	1.0	0.8	36.5	
TOTALS									73.0	
PAY TOTALS									73	

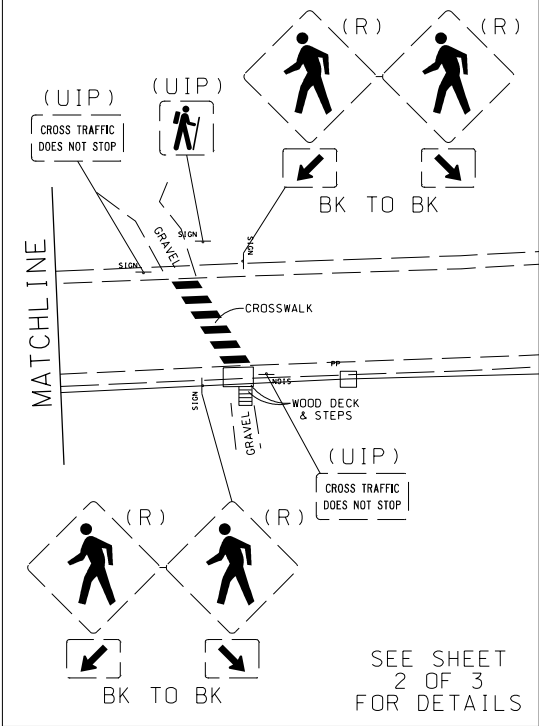
**EFK·Moen, LLC**  
Civil Engineering Design

MASTODON STATE PARK  
PEDESTRIAN CROSSING  
QUANTITY SHEET 1 OF 1



**GENERAL NOTES:**

1. TRAFFIC CONTROL FOR INSTALLING IMPROVEMENTS SHALL BE APPROVED BY THE ENGINEER AND MEET CURRENT MUTCD STANDARDS FOR 1-LANE TWO-WAY FLAGGER CONTROLLED OPERATIONS.
2. BEFORE SETTING POSTS OR PULL BOXES, CONTRACTOR SHALL CONTACT 1-800-DIG-RITE. DEVICES MAY BE ADJUSTED TO MISS EXISTING UTILITIES.



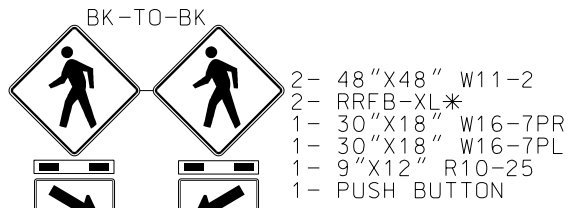
SEE SHEET  
2 OF 3  
FOR DETAILS

**EFK•Moen, LLC**  
Civil Engineering Design

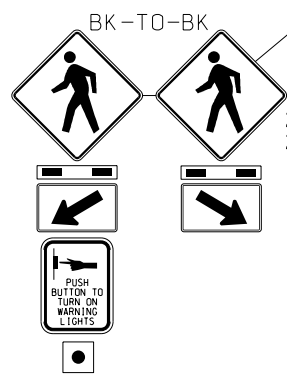
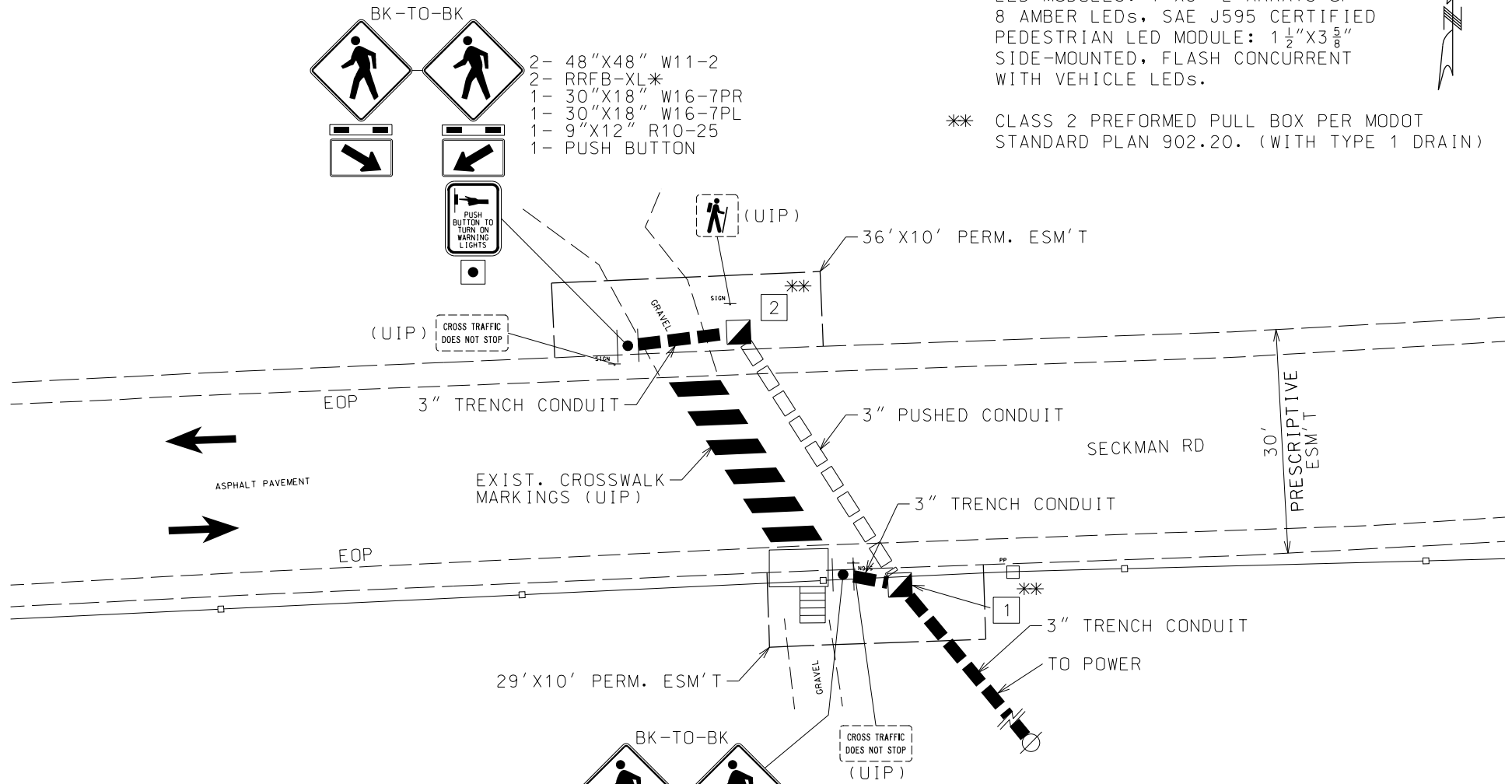
**MASTODON STATE PARK  
PEDESTRIAN CROSSING**  
SHEET 1 OF 3

\* TAPCO EXTRA LARGE RECTANGULAR RAPID FLASH BEACON RRFB-XL LED MODULES: 7"X3" 2 ARRAYS OF 8 AMBER LEDS, SAE J595 CERTIFIED PEDESTRIAN LED MODULE: 1 1/2"X3 5/8" SIDE-MOUNTED, FLASH CONCURRENT WITH VEHICLE LEDS.

\*\* CLASS 2 PREFORMED PULL BOX PER MODOT STANDARD PLAN 902.20. (WITH TYPE 1 DRAIN)

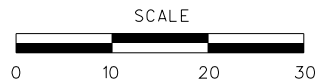


- 2- 48"X48" W11-2
- 2- RRFB-XL\*
- 1- 30"X18" W16-7PR
- 1- 30"X18" W16-7PL
- 1- 9"X12" R10-25
- 1- PUSH BUTTON



- 2- 48"X48" W11-2
- 2- RRFB-XL\*
- 1- 30"X18" W16-7PL
- 1- 30"X18" W16-7PR
- 1- 9"X12" R10-25
- 1- PUSH BUTTON

CONDUIT				
FROM	TO	CENTER TO CENTER DISTANCE	3" TRENCHED CONDUIT	3" PUSHED CONDUIT
Ø	①	X		
①	①	8	8	
①	②	40		38
②	②	15	15	
TOTALS			23	38



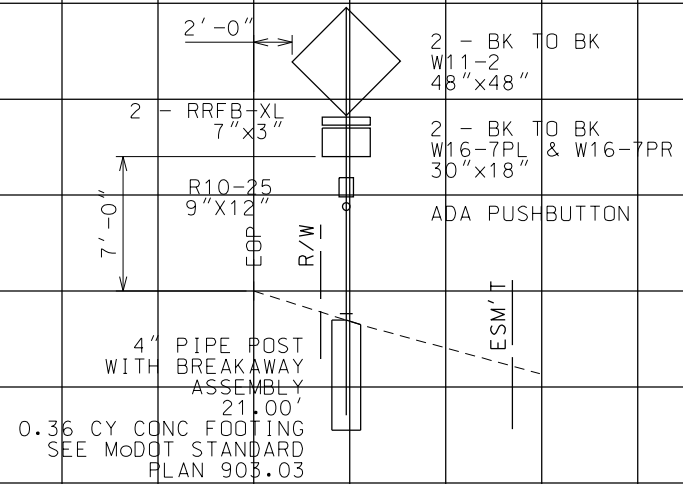
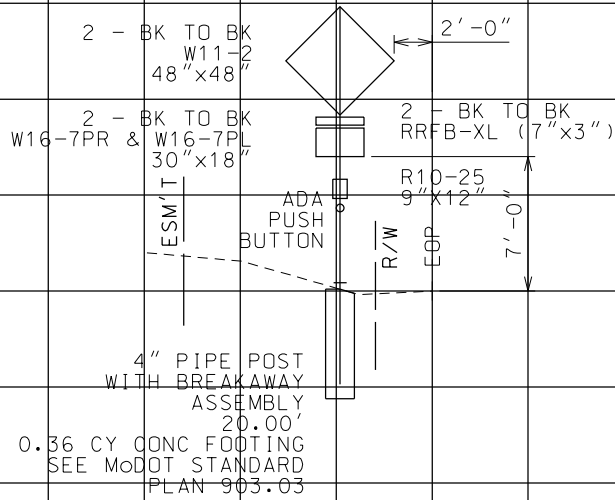
**EFK·Moen, LLC**  
Civil Engineering Design

**MASTODON STATE PARK  
PEDESTRIAN CROSSING**

SHEET 2 OF 3

NORTH SIDE OF SECKMAN RD

SOUTH SIDE OF SECKMAN RD



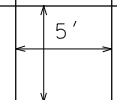
EACH POST TO SUPPORT THE FOLOWING:

2 - BACK TO BACK  
 W11-2, 48"x48" DG3 FYG,  
 PEDESTRIAN CROSSING (SYMBOL) FED SPEC  
 SKU: 373-05076  
 MATERIAL: ALUMINUM  
 DIAMOND GRADE CUBED FLUORESCENT  
 YELLOW GREEN (DG3 FYG)

2 - BACK TO BACK  
 TAPCO EXTRA LARGE RECTANGULAR  
 RAPID FLASH BEACON RRFB-XL  
 LED MODULES: 7"x3" 2 ARRAYS OF  
 8 AMBER LEDs, SAE J595 CERTIFIED  
 PEDESTRIAN LED MODULE: 1 1/2"x3 5/8"  
 SIDE-MOUNTED, FLASH CONCURRENT  
 WITH VEHICLE LEDs.

2 - BACK TO BACK  
 W16-7PL & W16-7PR, 30"x18"x0.80 DG3 FYG,  
 DOWN DIAGONAL LEFT AND RIGHT ARROW (FED SPEC) SIGN  
 MATERIAL: ALUMINUM  
 DIAMOND GRADE CUBED FLUORESCENT  
 YELLOW GREEN (DG3 FYG)

1 - 9"x12" R10-25  
 1 - PUSH BUTTON



**EFK Moen, LLC**  
 Civil Engineering Design

MASTODON STATE PARK  
 PEDESTRIAN CROSSING  
 SHEET 3 OF 3